

# CESSMIR BREAKTHROUGH BREAKFAST

## 3RD EDITION ON 6 FEBRUARY

Re-making it here: Returnees and non-state actors in the (European) externalisation of return migration management to The Gambia

Organized In collaboration with the Department of Social Work and Social Pedagogy (Ghent University) and UNU-CRIS

### Dr. Rossella Marino

Department of Social Work and Social Pedagogy, Centre for the Social Study of Migration and Refugees (CESSMIR) & UNU-CRIS, Bruges



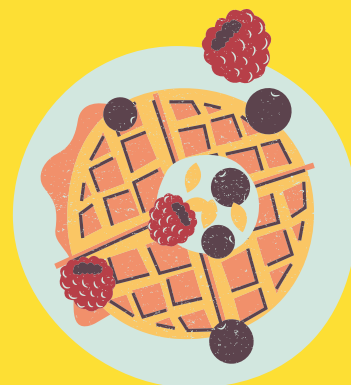
The first time I flew to The Gambia to start my fieldwork, I witnessed a deportation. A young man was sitting at the very back of the plane, held tight by at least 5 police officers. When I started agitating, one of the officers told me not to be scared because the deportee could not harm me. Yes, she thought I was not moved by the physical and emotional pain of the young man, but by the fear that he could harm me somehow. This episode is representative of my PhD trajectory: delving into the manifold ways in which EU-funded migration governance produces mobility injustice, while dealing with the ethical implications of researching this from the standpoint of a relatively privileged, White European woman.



### Mustapha Sallah

Secretary general of Youth Against Irregular Migration (YAIM)

Mustapha Sallah is a Gambian national who attempted an irregular migration journey to Europe, but, detained in Libya, returned to The Gambia through a so-called voluntary return and reintegration programme. Upon doing that, in 2017, he founded together with other assisted returnees Youth Against Irregular Migration (YAIM). This grassroots association has worked with several international, non-governmental and local organisations as well as collaborated with many academics and journalists over the years. As such, it is one of the locally embedded non-state actors working with European and international partners on migration governance, but having very clear own ideas and objectives.



A 'Breakthrough Breakfast' starts with a cup of coffee and some pastry, which ensures we are fully awake and ready to hear more about the latest research findings on the social impact of migration and refugees

### PROGRAMME

09.00-09.30

Reception & breakfast  
2nd Floor

09.30-11.00

Research & practice  
Room 2.2

### LOCATION

Campus Dunant  
Dunantlaan 2  
9000 Gent

OR Online

Presentation will be streamed  
(without Q&A)  
Link will be provided  
to those who sign up

This edition will be in English



<https://event.ugent.be/registratio n/bbmigrationmanagement>  
Feel free to spread this invite further in your network!